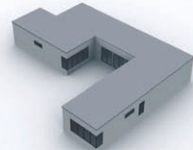


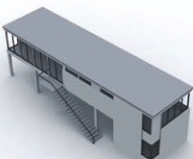
● **两廊空中组合房屋**  
 This two-bar bridge structure connects the entrance to the second floor of the entrance. This way the entrance has formed a square parking space. The bridge has a "bar" - a bridge with light color. The second floor has two bedrooms, one of which is a double bedroom. The entire house is a platform. It is also a very convenient design. The entrance is also designed as a double bedroom for children's play space, and provides a great view of the house's surroundings.

● **TWO-BAR BRIDGE + SLEEPING PORCH**  
 The Two-bar Bridge's most interesting feature is a bridging bar of bedrooms, that creates a convenient carport on the ground floor below. The ground floor is made up of a living/dining room and a kitchen. The second floor contains two bedrooms, and a versatile media room that opens to an outdoor terrace that connects to an enclosed sleeping porch. The sleeping porch is perfect as a secondary space for entertaining or a confinement children's play space, and provides great views of the house's surroundings.



● **三廊组合房**  
 This house is a unique combination of space, it has a modern and classic style. It provides a unique personality and style. The exterior is a modern style of living space with a unique personality. The exterior space can be used to strengthen the connection.

● **3 BAR PINWHEEL**  
 The 3 Bar Pinwheel is a study in Impulsivity, it exhibits Modern Modular's ability to provide a uniqueness of space, both inside and outside the structure. Negative space created by the exterior frame gives rise to individually implied exterior spaces. Within the interior expansion views to the surrounding site allow for a strong connection with the building's environment.



● **轻钢龙骨拼装式集装箱房屋**  
 This house is a unique combination of space, it has a modern and classic style. It provides a unique personality and style. The exterior is a modern style of living space with a unique personality. The exterior space can be used to strengthen the connection.

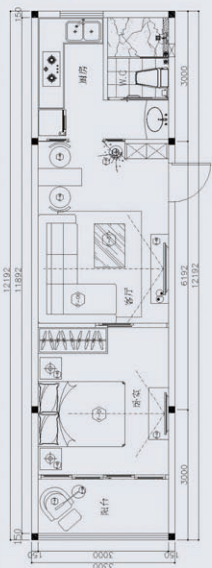
● **Light steel framed assembled container house**  
 Light steel framed assembled container house integrates the manufacture method of sandwich panel assembled container house and light steel framed house. The steel frames of wall body takes high quality cold rolling hot-dip galvanized steel as materials, and employs production process method of cold bending form steel plate. Interior wall is lined with the glass wool, thus container house has good heat preservation, heat insulation and sound insulation performance. The wall materials are made of steel, so the maintenance of the structure is more simple and easy. Light steel framed assembled container house appearance and modeling of house. LIGHT compatible steel grating, fireproof, strength and comfort standard of light steel framed assembled container house.



佛山市胜邦钢结构有限公司  
 Foshan Shengbang Steel Structure Co., Ltd.  
 地址：佛山市南海区里水镇联和工业园胜邦钢结构有限公司总部  
 电话：0757-63323366 传真：0757-61193662  
 网址：www.shengbangsteel.com www.shbhouses.com  
 邮编：528130  
 Add: Pingjiang Industrial District Shengbang Village, Shiqian Town, Nanhai District, Foshan City, Guangdong Province, China  
 Tel: 0757-63323366 Fax: 0757-61193662  
 Http: www.shengbangsteel.com Http: www.shbhouses.com  
 E-mail: shb@shengbangsteel.com

BUILD YOUR FUTURE 筑创未来

箱体公寓整体外观  
 Overall appearance of container house



| 结构系统 | 保温隔热  |       | 隔音          |            | 防火   |      |
|------|-------|-------|-------------|------------|------|------|
|      | 系统指标  | 系统指标  | 系统指标        | 系统指标       | 系统指标 | 系统指标 |
| 外墙   | K=0.7 | 0.462 | 空气层厚度 >45dB | 基本计算: 63dB | 要求值  | -    |
| 外窗   | 交通    | 按要求   | 外窗 >30dB    | 按要求值       | 1.00 | 1.00 |
| 内墙   | N/A   | 0.59  | 分户墙 >45dB   | 50dB       | 按要求值 | 1.00 |
| 楼面   | N/A   | 0.32  | 分户楼板        | 基本计算: 65dB | 1.00 | 1.00 |
|      |       |       | 分户楼面层高      | 要求值: 78dB  |      |      |



▲ 箱体公寓整体外观  
 Effect of overall appearance of container house

▲ 箱体公寓客厅效果展示  
 Effect of living room of container house

▲ 箱体公寓卧室效果展示  
 Effect of bedroom of container house

▲ 箱体公寓厨房效果展示  
 Effect of kitchen of container house